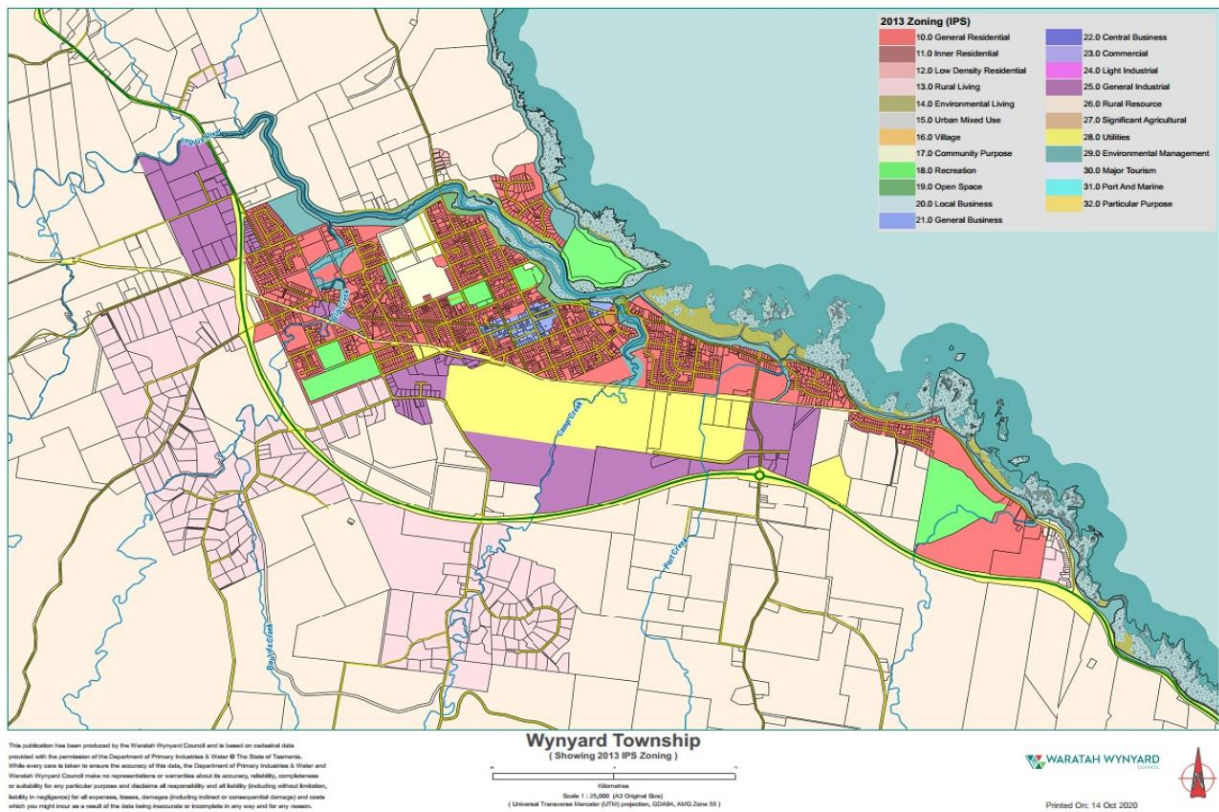
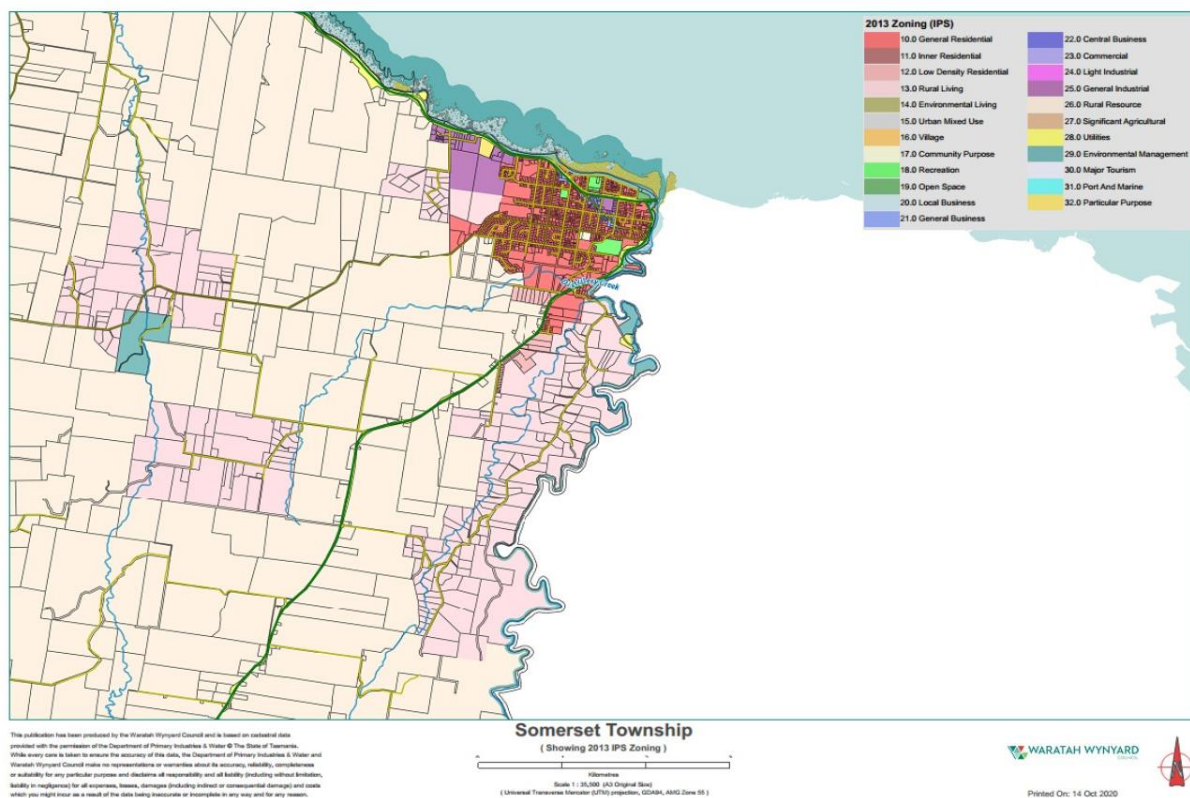
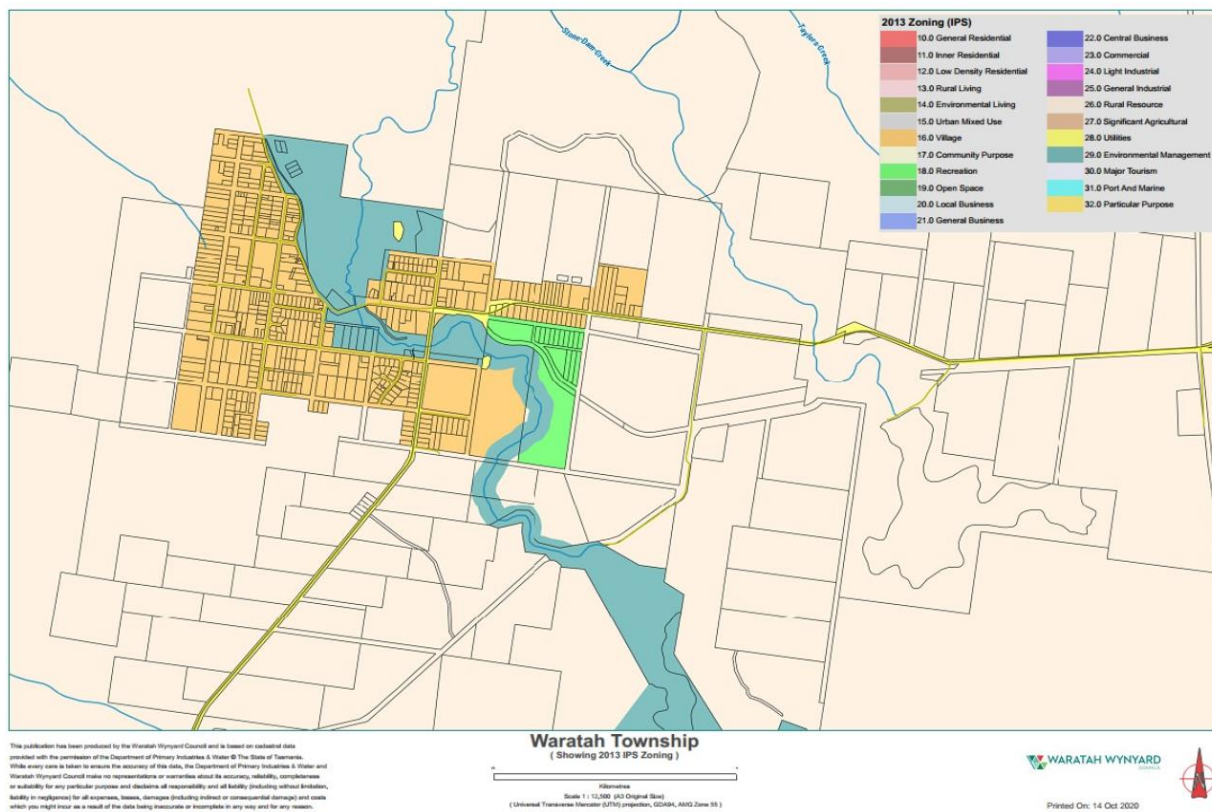
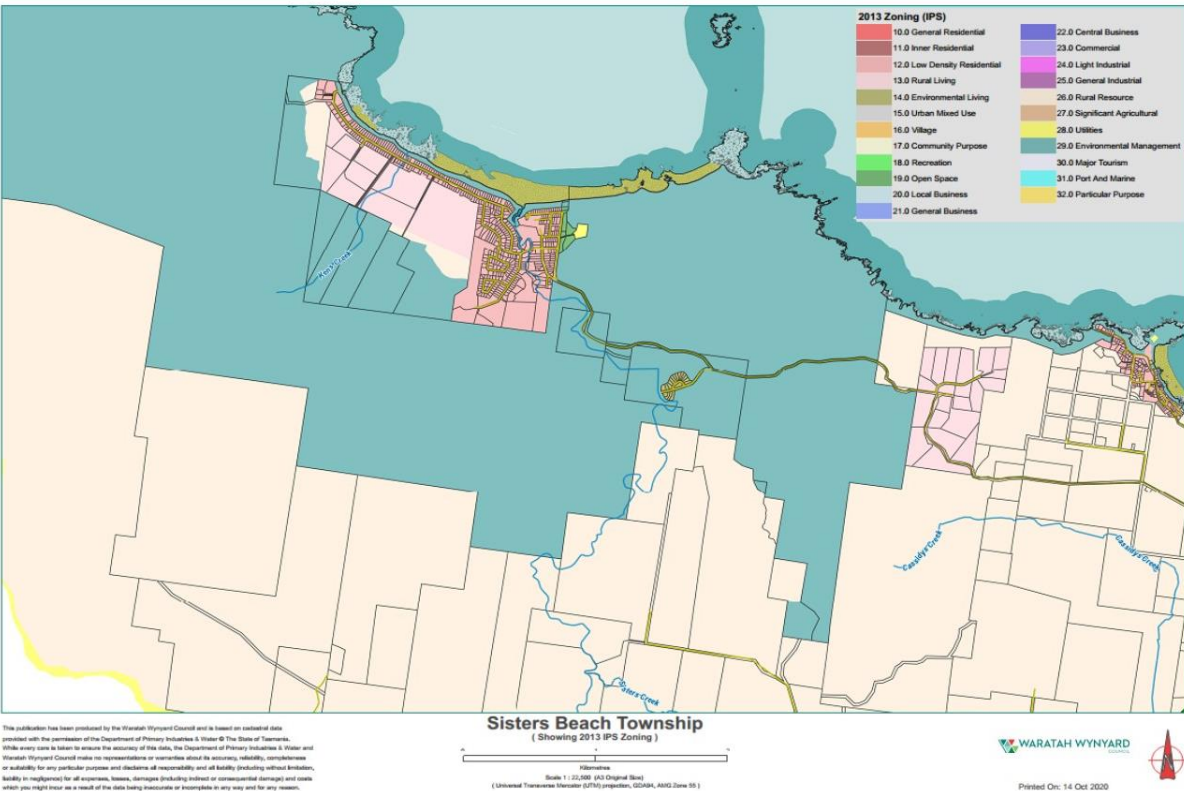
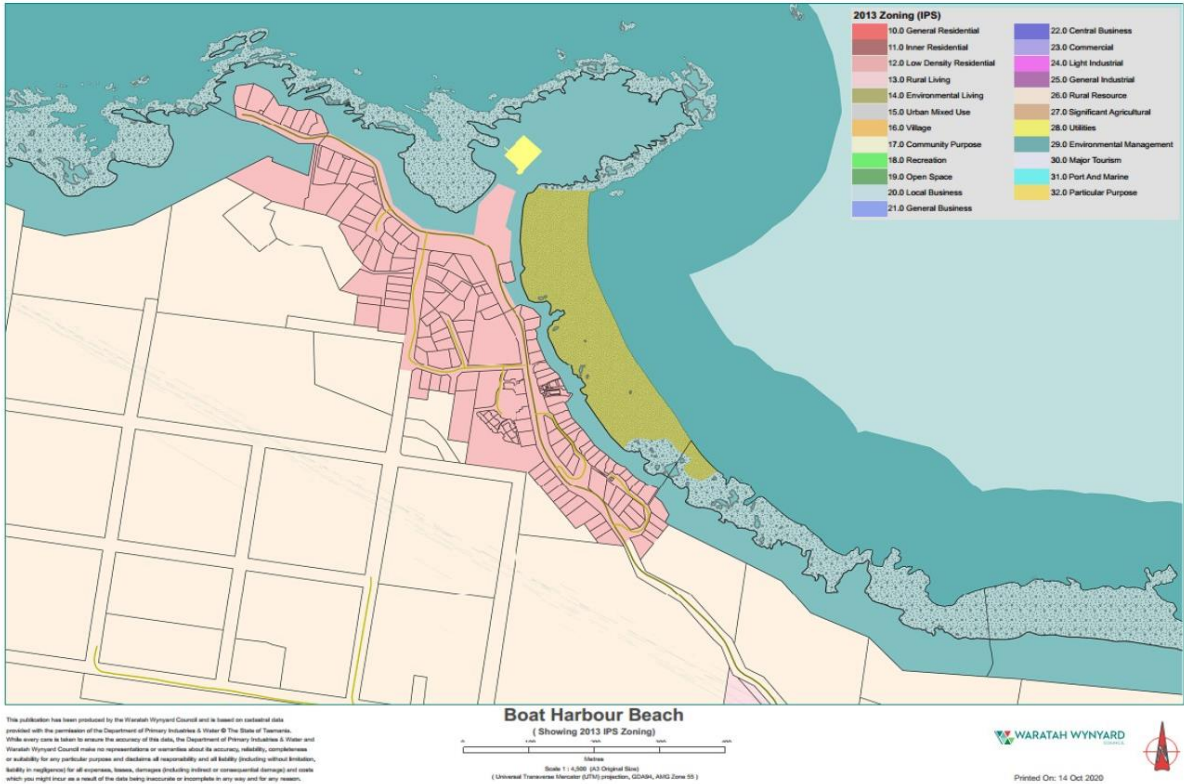


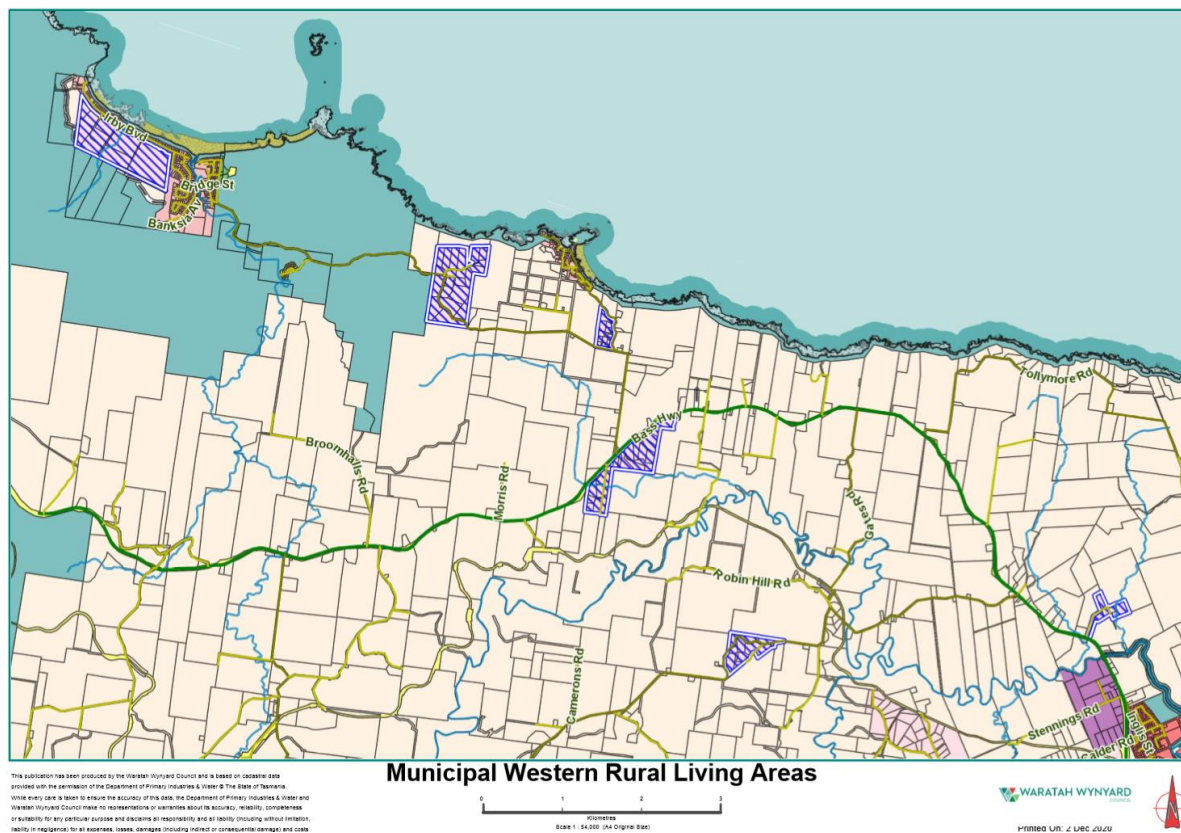
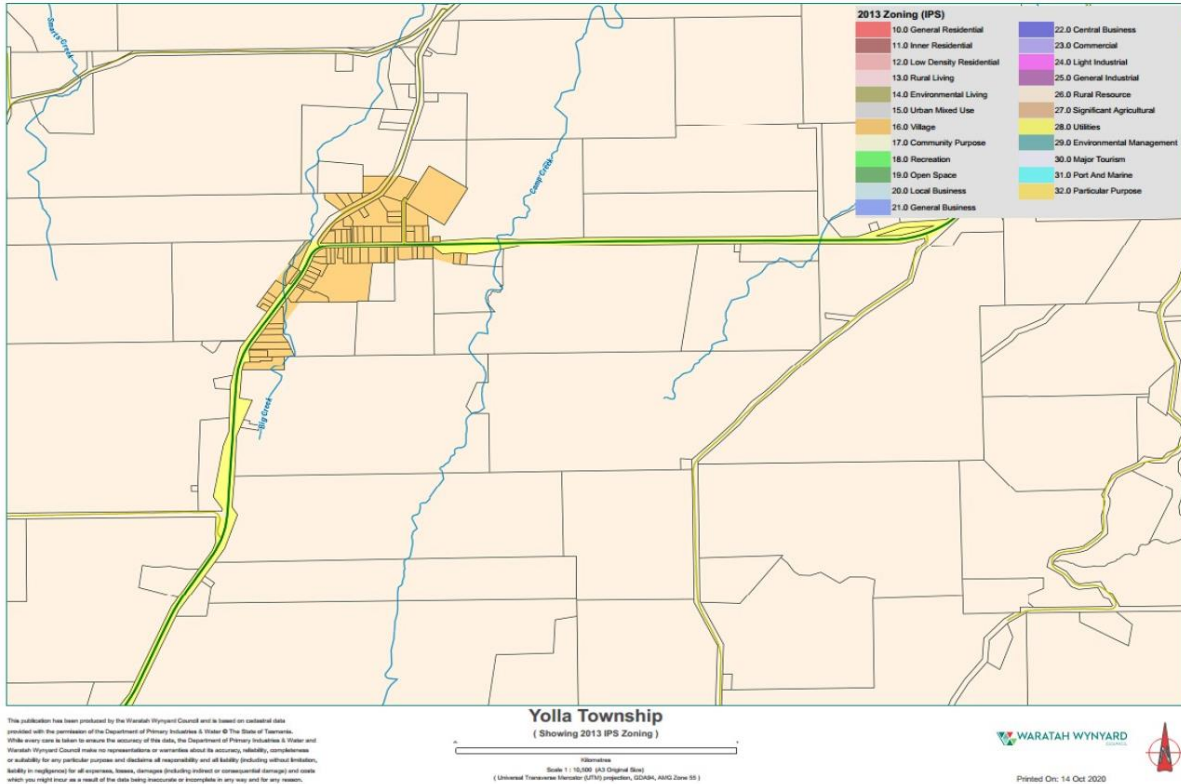
# Appendix 1 Towns and villages in the Settlement Strategy



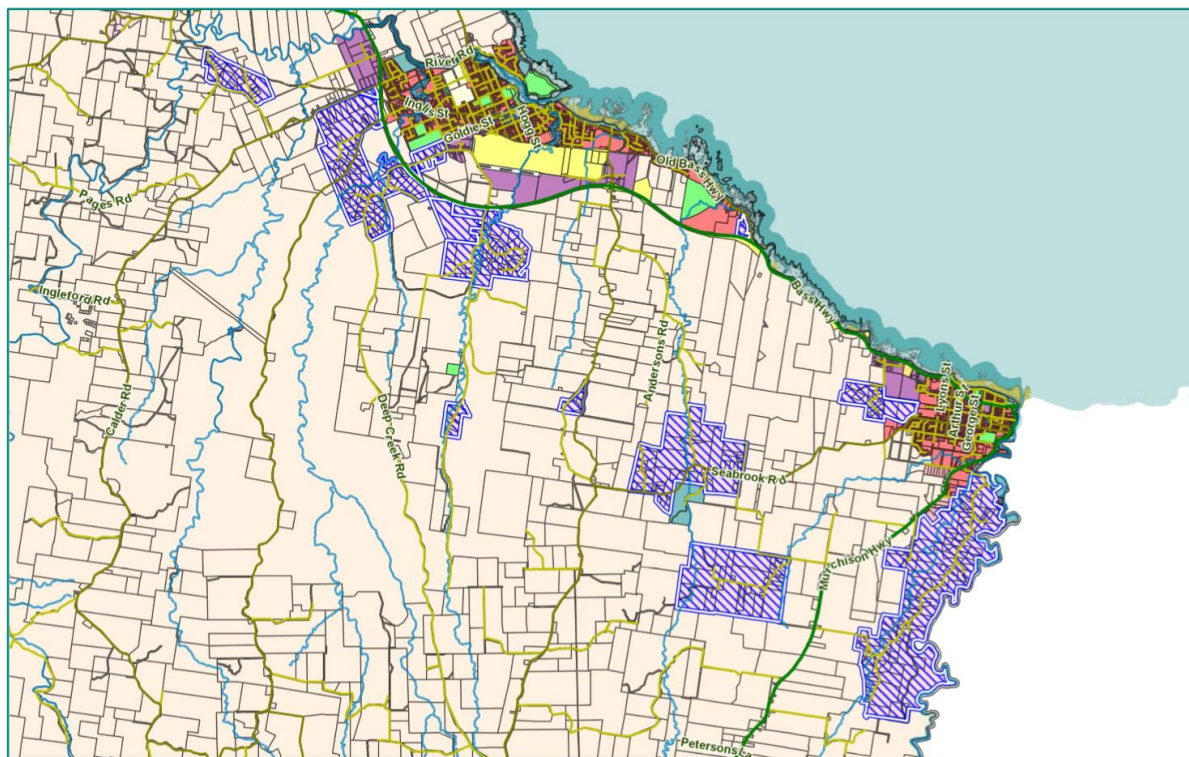






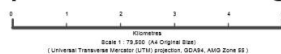






This publication has been produced by the Waratah Wynyard Council and is based on cadastral data provided with the permission of the Department of Primary Industries & Water & the State of Tasmania. While every care is taken to ensure the accuracy of this data, the Department of Primary Industries & Water and Waratah Wynyard Council make no representations or warranties about its accuracy, reliability, completeness or suitability for any particular purpose and disclaims all responsibility and all liability, including without limitation, liability in negligence for all expenses, losses, damages (including interest or consequential damages) and costs which may be incurred by any person in reliance on the data herein contained or to the contrary in any case with the Waratah Wynyard Council.

## Municipal Eastern Rural Living Areas



WARATAH WYNYARD  
 COUNCIL



Printed on: 2 DEC 2020