

1. Council will strive to uphold a fair balance within the community and the environment and in accordance with the *Dog Control Act 2000*, Council may declare and regulate parts of the municipality to be:
  - 1.1 Dogs Off Lead (provided dogs are under effective control).
  - 1.2 Dogs On Lead between 10am and 6pm (Dogs Off Lead all other times).
  - 1.3 Dogs Prohibited (Dogs prohibited from entering other than guide/hearing dogs).
2. The declared areas are to be identified through a traffic light style colour system, as described below:
 

Green	Dogs Off Lead
Yellow	Dogs On Lead
Red	Dogs Prohibited
3. Council will supply and maintain signage at appropriate access points to clearly identify declared areas. The following maps outline those declared areas:

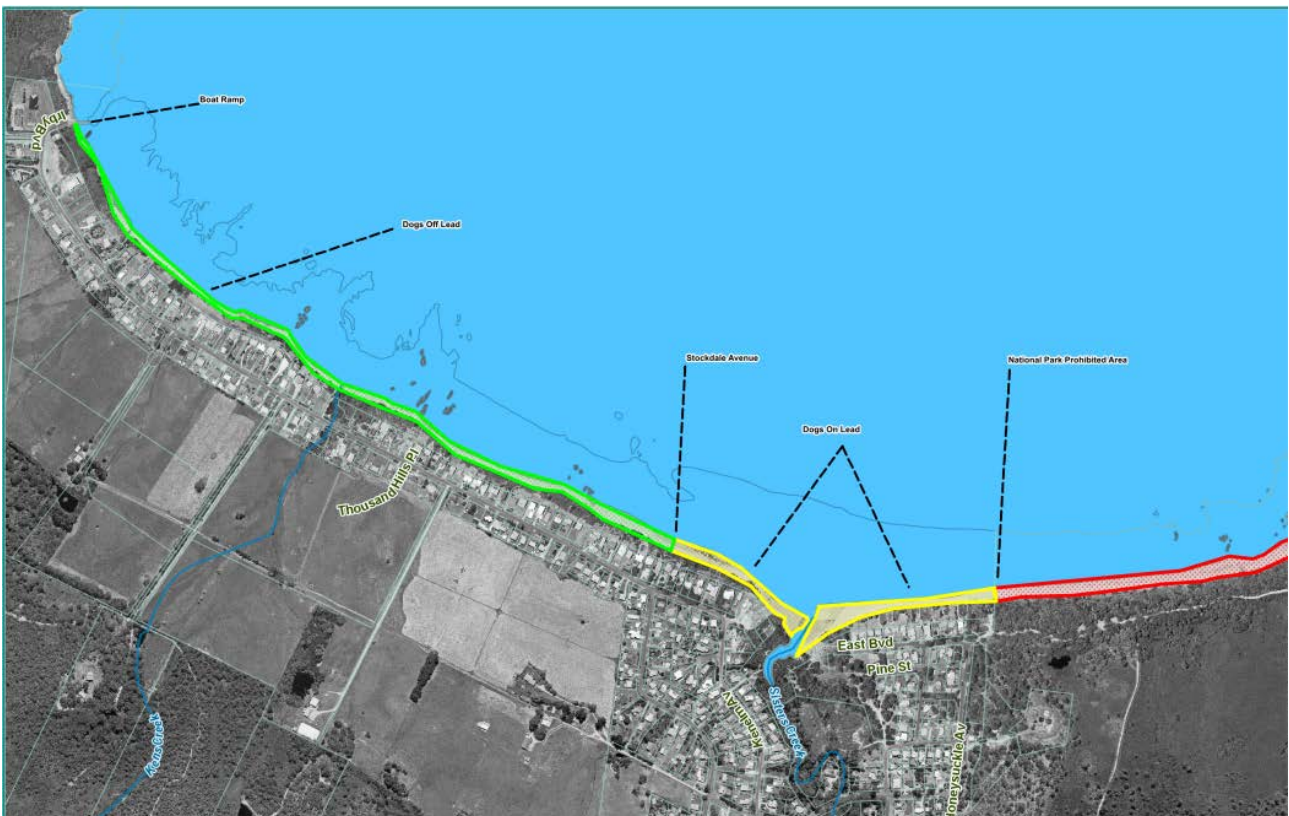


Figure 1. Sisters Beach – Declared Dog Areas

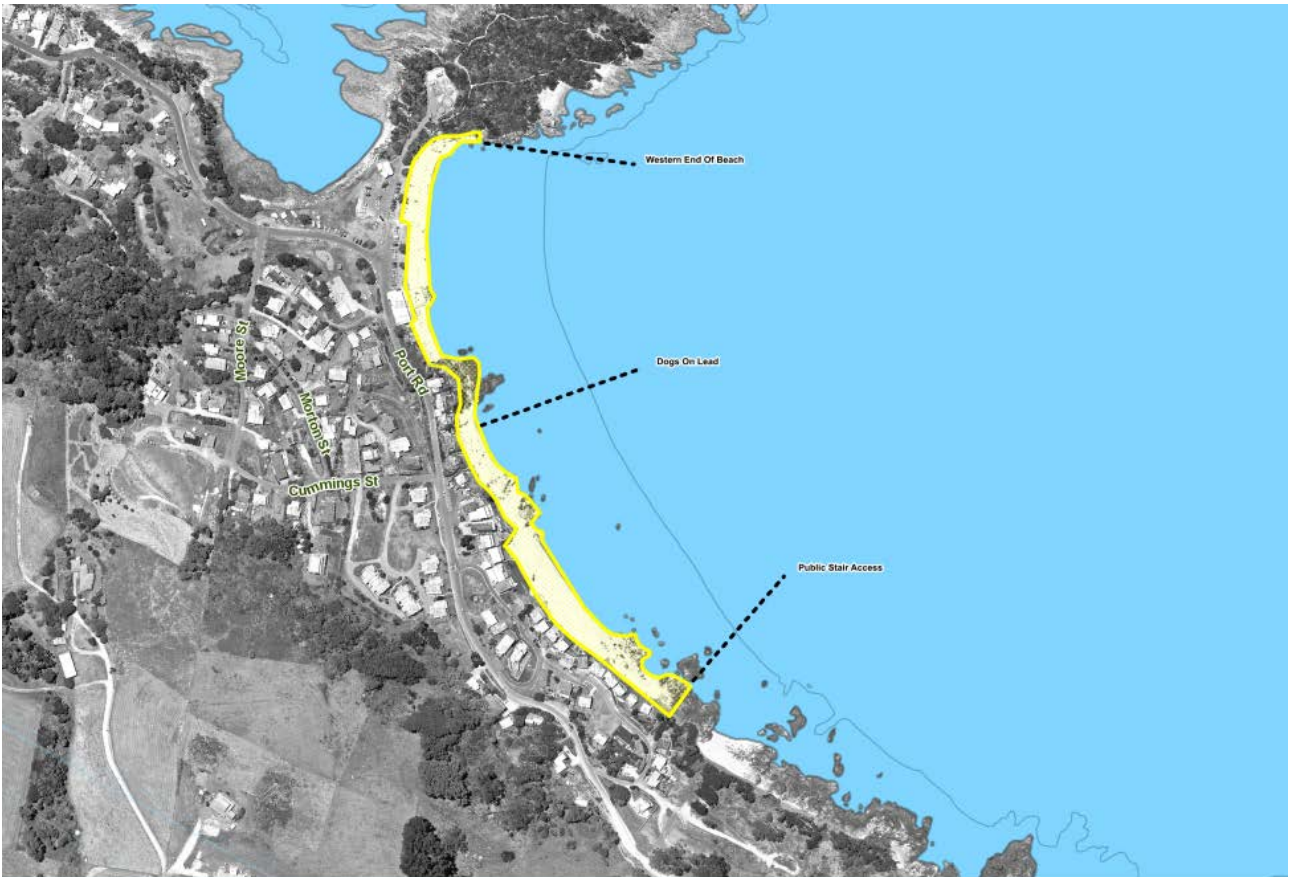


Figure 2. Boat Harbour Beach - Declared Dog Areas

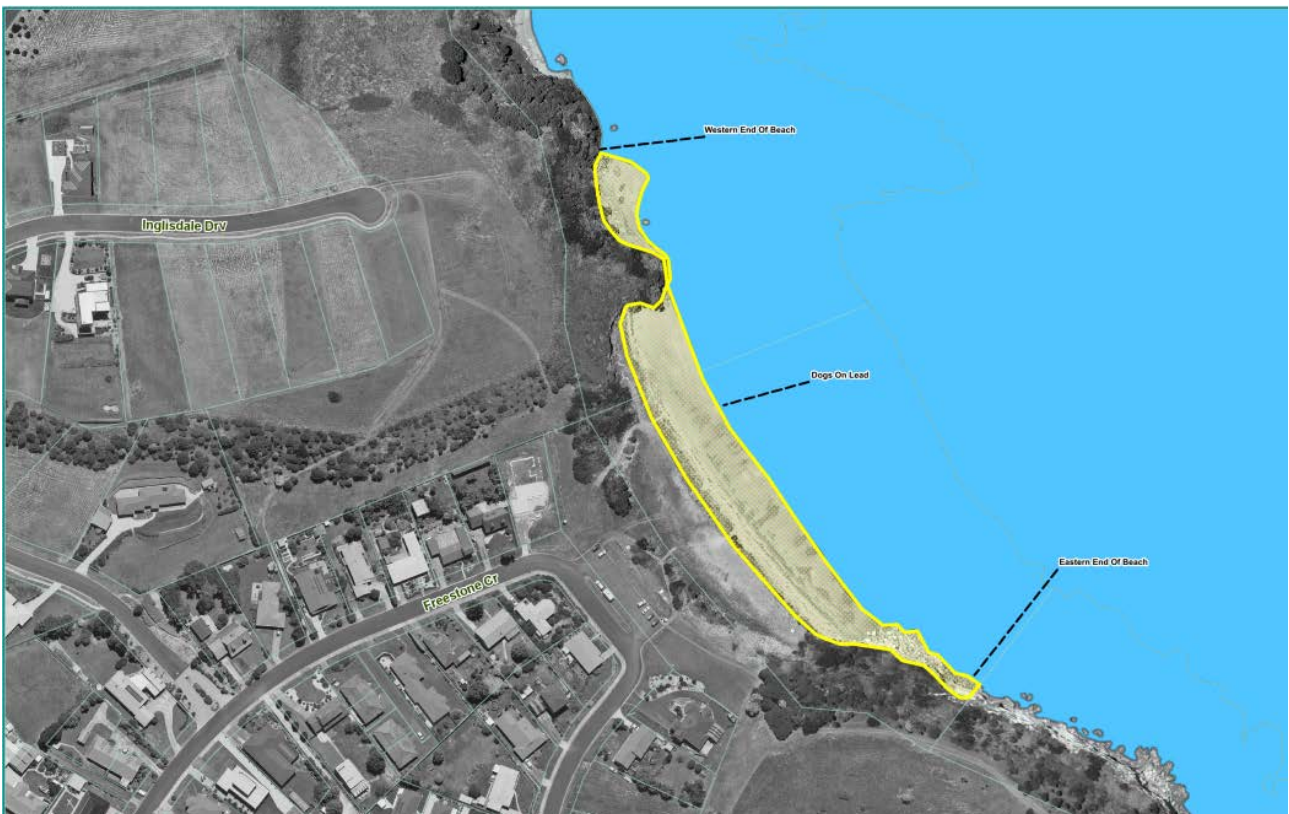


Figure 3. Fossil Bluff – Declared Dog Areas

DOC NO: GOV.011	VERSION NO: 4	APPROVAL DATE: 9 December 2019
CONTROLLER: General Manager	APPROVED BY: - Council	REVIEW DATE: May 2022



Figure 4. Wynyard – Declared Dog Areas



Figure 5. Wynyard – Declared Dog Areas

DOC NO: GOV.011	VERSION NO: 4	APPROVAL DATE: 9 December 2019
CONTROLLER: General Manager	APPROVED BY: - Council	REVIEW DATE: May 2022

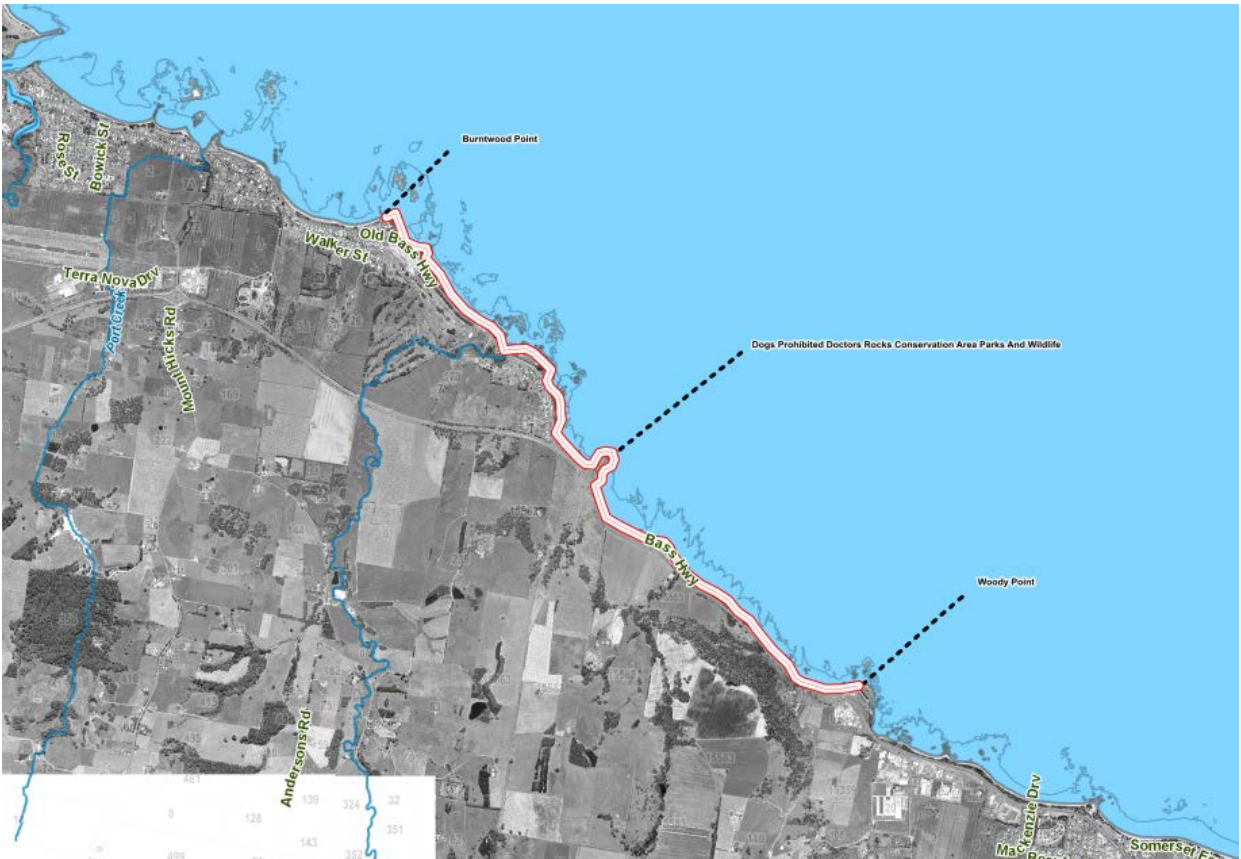


Figure 6. Doctors Rocks – Declared Dog Areas

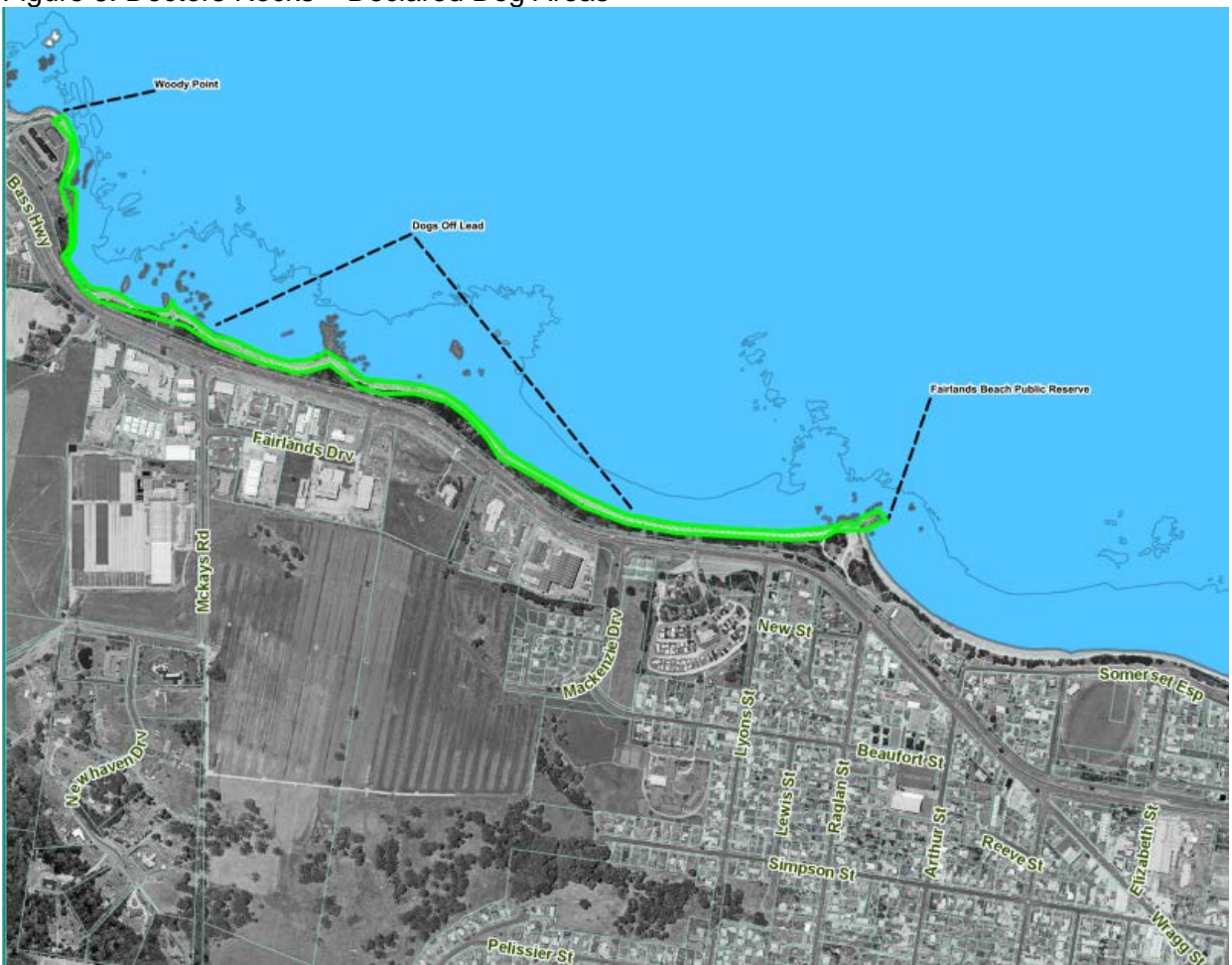


Figure 7. Somerset – Declared Dog Areas

DOC NO: GOV.011	VERSION NO: 4	APPROVAL DATE: 9 December 2019
CONTROLLER: General Manager	APPROVED BY: - Council	REVIEW DATE: May 2022

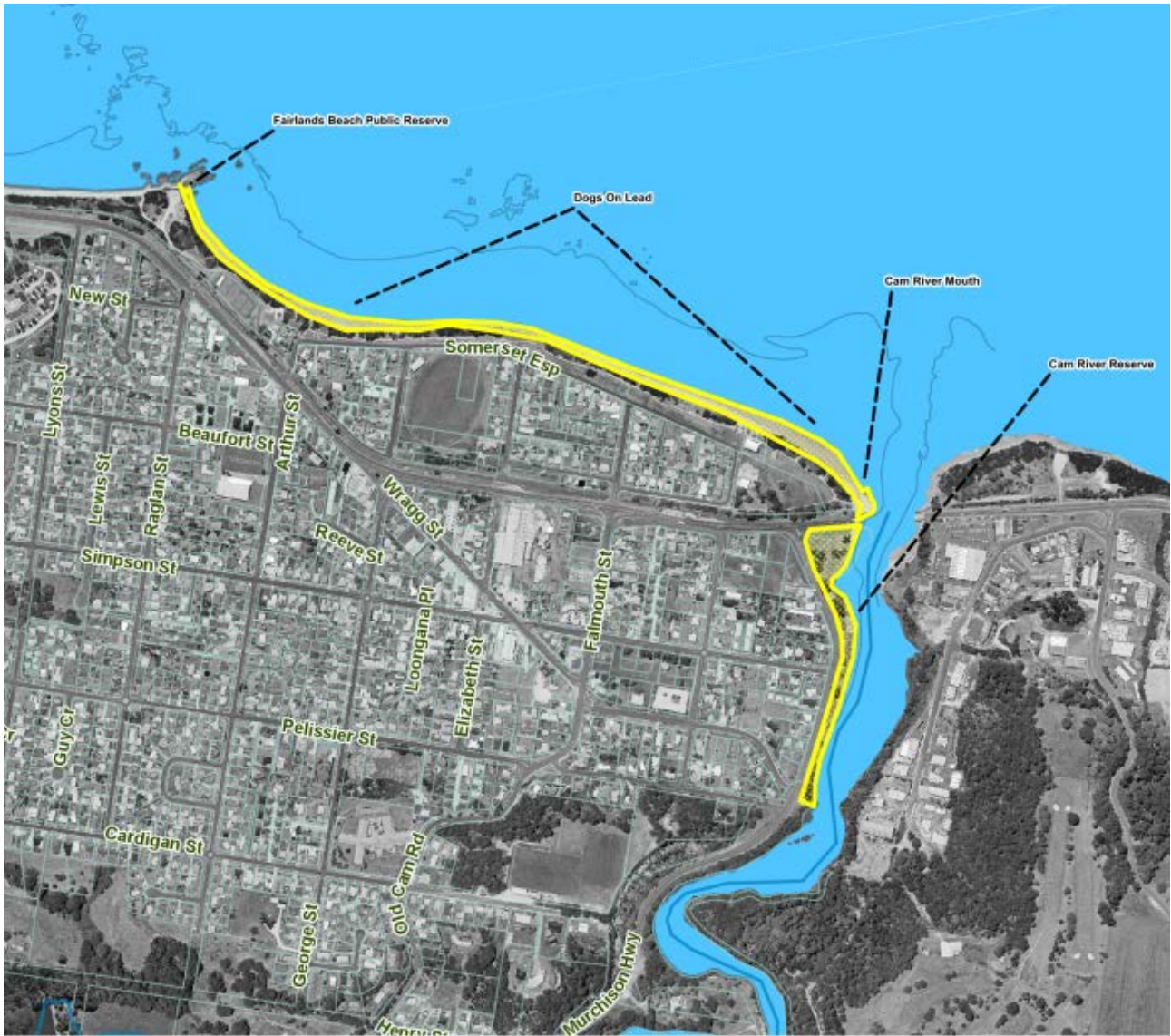


Figure 8. Somerset – Declared Dog Areas

DOC NO: GOV.011	VERSION NO: 4	APPROVAL DATE: 9 December 2019
CONTROLLER: General Manager	APPROVED BY: - Council	REVIEW DATE: May 2022